

## End result of build

**Permanent facilities Preston South Primary School will receive from the completed build in December 2022, creating capacity for an extra 200 local students.**



Three-storey main learning and administration building. More information on the following pages.

- A. Entry forecourt
- B. Landscape buffer
- C. Staff outdoor area
- D. Nature play
- E. Playground

Multipurpose space/outside school hours care

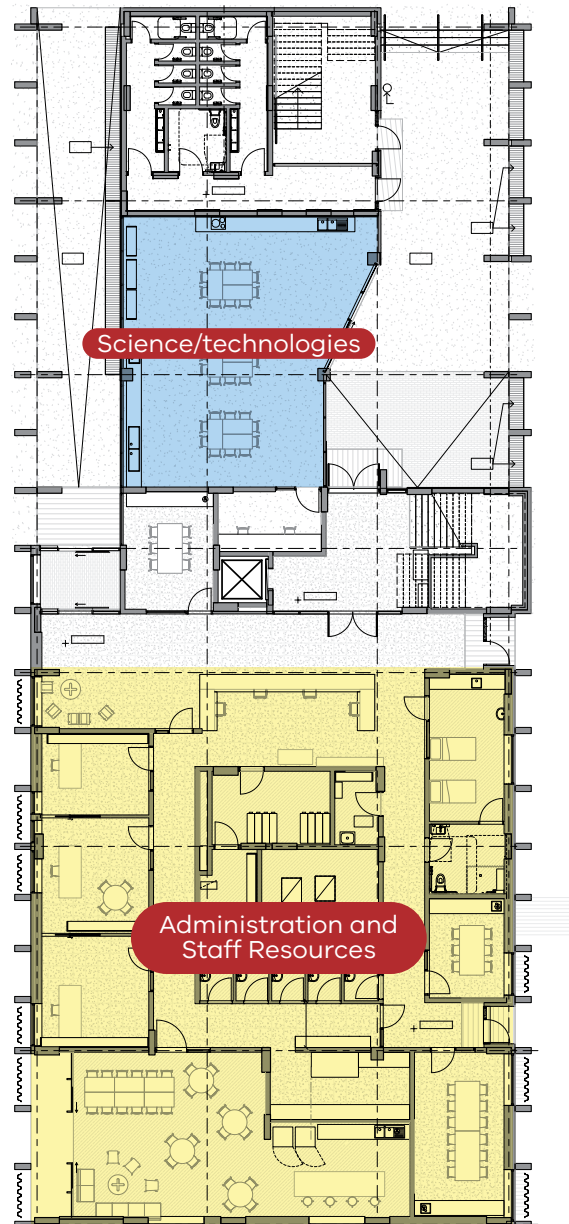
Food technology space

Existing buildings that will be kept

Existing open space

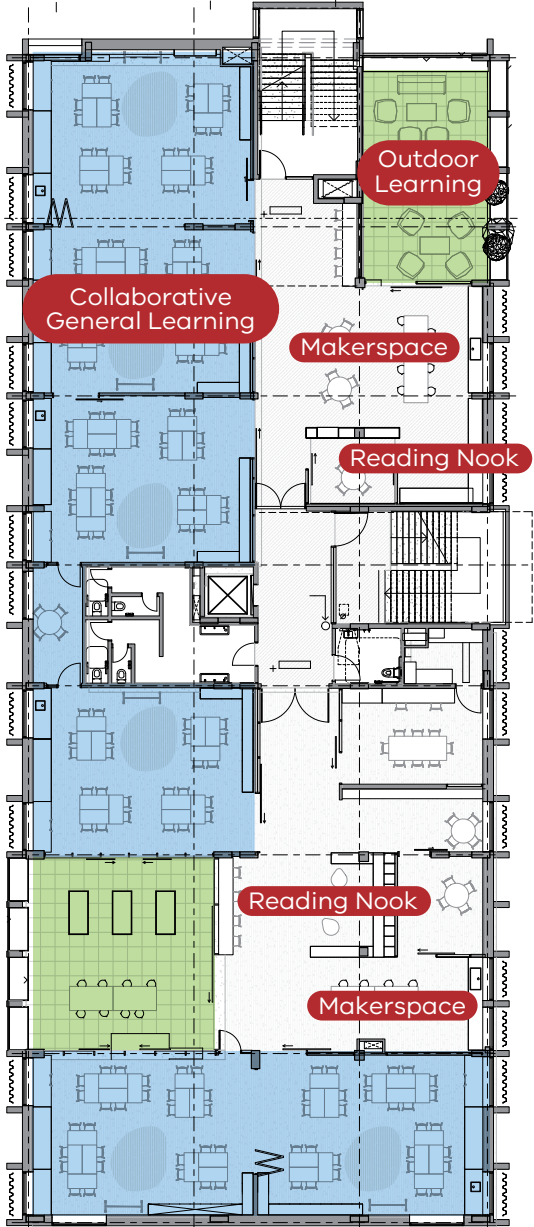
# New Main Learning and Administration Building

---

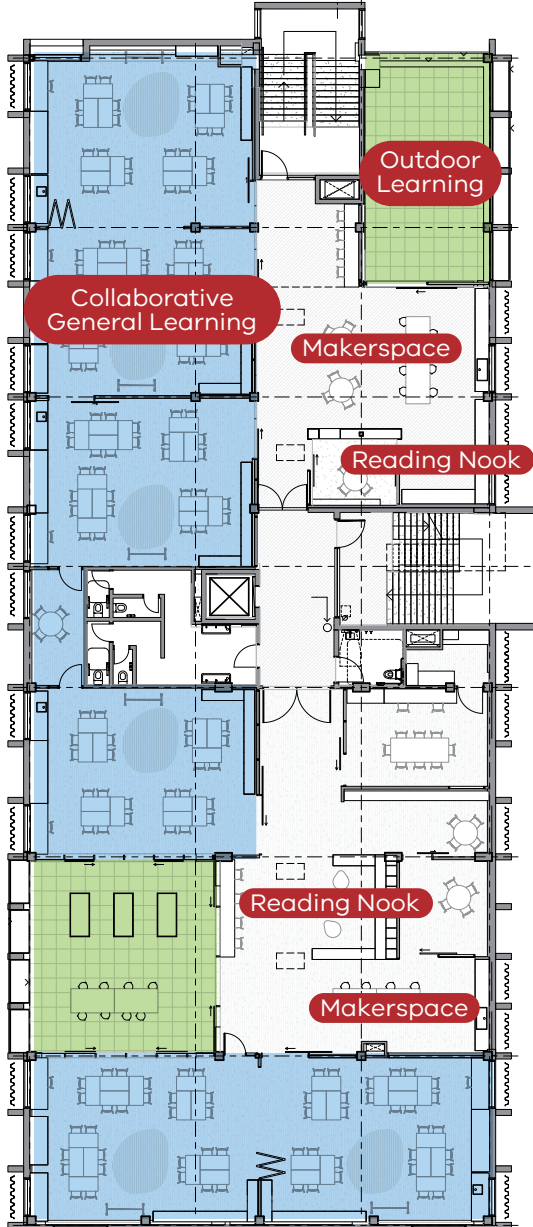


Ground level

# New Main Learning and Administration Building



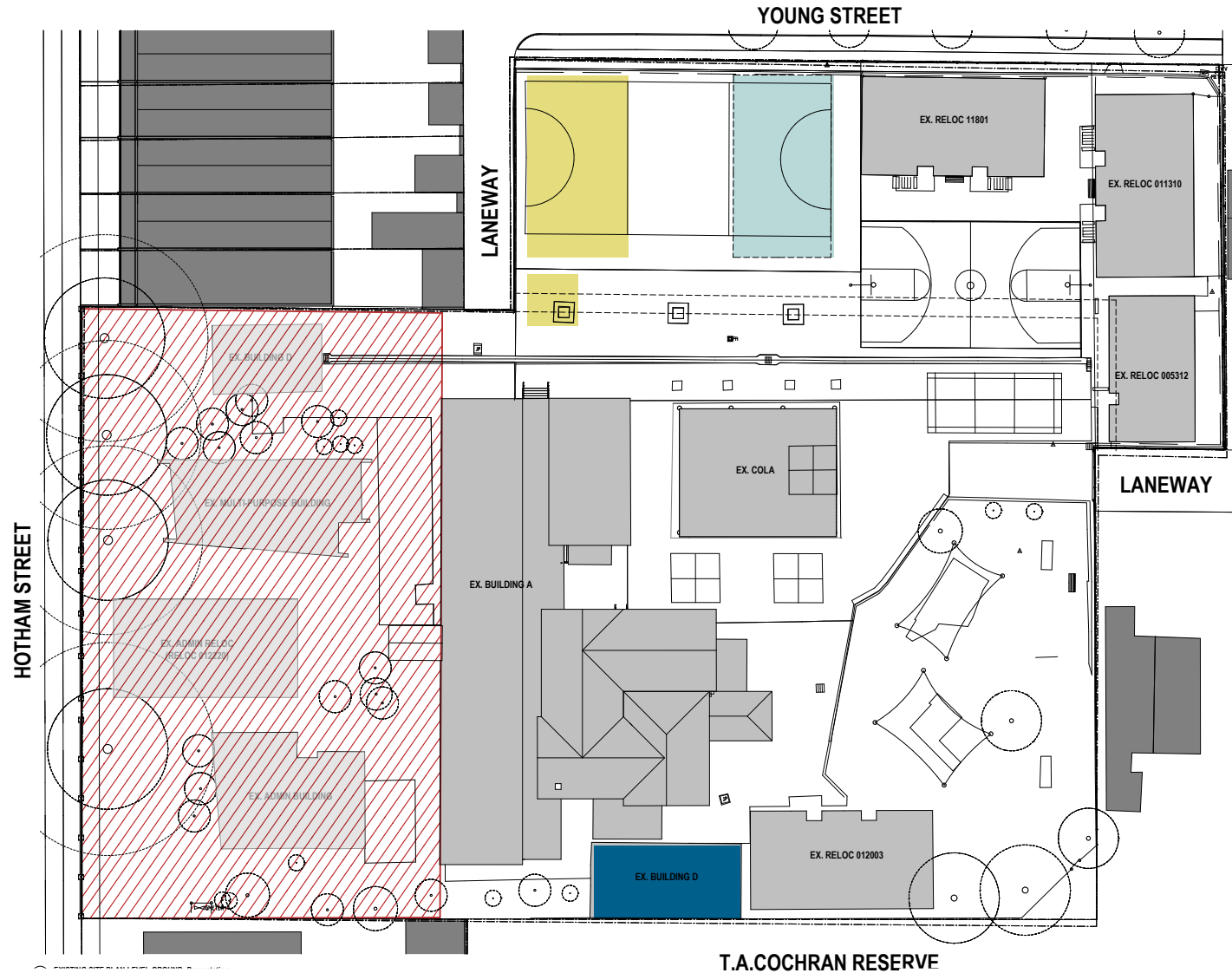
Level 1



Level 2

## During the build

Existing facilities at Preston South Primary School will be temporarily repurposed during the build.



Relocatable building added for additional capacity. This will be removed from site after build is complete.

Relocatable staff admin building and WC added. These will be removed from site after build is complete.

Hall to be repurposed as outside school hours care space. This building will be removed after build is complete.

Active construction site with works to be complete in December 2022. Temporary school entry via Young Street and T.A. Cochran Reserve. Existing trees along Hotham Street entry to be retained.