

TRANSFORMING GLENROY COLLEGE DESIGN BACKGROUNDER

Architect designs unveiled



Glenroy College's new buildings will provide a welcoming and inclusive gateway to the school.

Glenroy College has a new senior and junior school, a state-of-the-art library (learning resource centre), administration centre and staff hub opening term one, 2021.

We are replacing around half of the college's older buildings with architect-designed, permanent modular buildings.

Glenroy College's \$9.215 million modernisation project is part of the Victorian Government's \$7.2 billion investment to build new schools and upgrade more than 1,460 existing ones. In 2018, they committed to continuing that record investment by opening 100 new schools by 2026. This school-building boom is supporting 9,000 construction jobs in Victoria.

College values - respect, integrity, achievement and teamwork - and school community consultation helped shape the master plan and learning environment designs.

It's the largest permanent modular, modernisation project being rolled-out by the Victorian School Building Authority this year.

This innovative modular construction method will have students and staff enjoying high quality, new surrounds - in half the time of traditional building.

Greater choice and opportunities for students

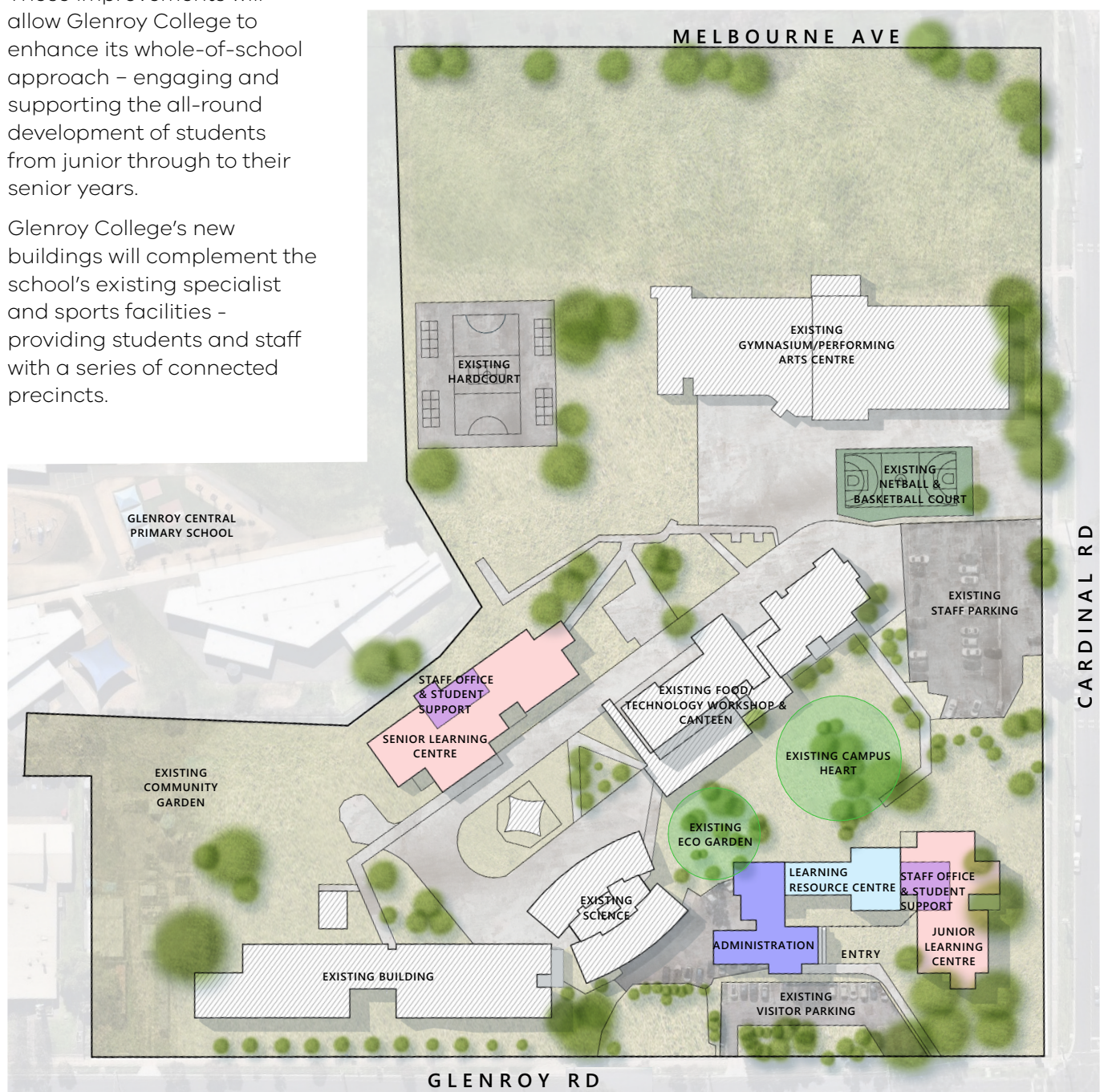
With a greater range of learning environments, students will gain more subject choices, new opportunities and extra support to reach their full potential in reading, maths, science, technology, hospitality, critical and creative thinking, the arts and physical education.

These improvements will allow Glenroy College to enhance its whole-of-school approach – engaging and supporting the all-round development of students from junior through to their senior years.

Glenroy College's new buildings will complement the school's existing specialist and sports facilities – providing students and staff with a series of connected precincts.

These include:

- junior and senior learning centres
- learning resource centre (library)
- administration centre
- staff hub
- indoor gymnasium
- performing arts centre
- woodwork and food technology centre
- STEAM centre (science, technology, engineering, arts and maths)
- outdoor basketball and netball courts
- community garden
- expansive outdoor recreation areas



Glenroy's education precinct

Prominently located near the corner of Glenroy and Cardinal Roads, Glenroy College's new architecture will enhance the local streetscape and define the area's education precinct.

Front of house

The new administration centre will support teachers in offering a broad curriculum with improved access for students, families and visitors.

Glenroy College's new senior learning centre, administration/ staff hub, learning resource centre (library) and junior resource centre, on the corner of Glenroy and Cardinal Roads



A new way of learning

Separate junior and senior learning centres will be made up of general and multipurpose teaching spaces with connections to specialist areas, helping students tailor individual pathways from a wide curriculum offering.

Staff work areas co-located within the senior and junior learning centres will strengthen student-teacher bonds and increase opportunities for gaining feedback and support. Spaces for collaborative learning in 'neighbourhoods' and 'communities' will promote creativity and innovation.

Junior learning centre with a small community feel

The welcoming and nurturing junior learning centre is designed to help Years 7-9 students transition smoothly and thrive in their secondary school journey with the support they need.



Indoor locker areas located next to home rooms in the junior learning centre

Senior learning centre empowering students

We have designed the new senior learning centre to meet the learning and wider needs of Years 10-12 students in VCE and VCAL programs. As well as extending and supporting them academically, they will be able to access dedicated careers and

wellbeing services. New facilities will support independent learning, empowering students to be engaged learners and leaders, and preparing them for tertiary or vocational education and future employment.

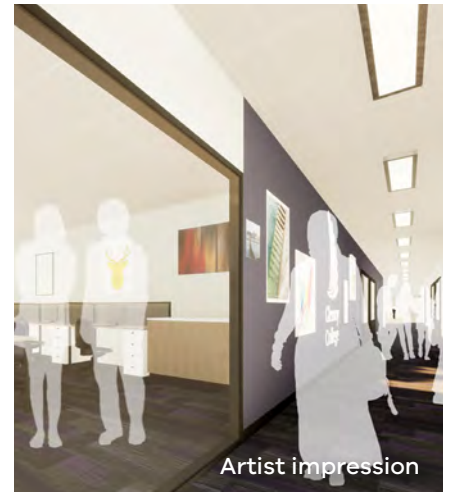
Features

- Senior staff hub and shared staff/student kitchenette
- Year level homerooms and locker hubs
- Lecture style seating, smaller break-out spaces for tutorials, seminar and social spaces
- Outdoor learning and reflection spaces include decks and a private courtyard



Artist impression

Senior learning centre (external)



Artist impression

Senior learning centre (internal)

Extended learning

In the learning resource centre's flexible, multipurpose spaces, students can discover and participate in research, study, quiet reflection, reading, creation, tutorials, group meetings or discussions.

Community gains

The Glenroy community is set to have access to new meeting rooms in the college's library – which along with the popular gymnasium and performing arts centre is bookable for after-hours use.



Artist impression

Learning resource centre



Artist impression

The junior and senior learning centres both feature central outdoor piazzas ('green hearts')

Building community

The junior and senior learning communities are arranged around outdoor 'green campus hearts' (landscaped piazzas), one for junior and one for senior students. Centrally located, the campus hearts provide an inviting and safe place for school or casual gatherings, collaboration, eating, passive recreation and socialising.

The great outdoors

All indoor and outdoor spaces are considered as opportunities to inspire learning, enquiry and engagement. For improved health and wellbeing, each new learning environment opens onto or has an outdoor aspect.

Inclusive design for student wellbeing

The diversity of modern indoor and outdoor learning environments caters for students' different abilities and learning styles. Inclusive spaces create a secure and social experience for students and stronger sense of belonging. Examples include small to large classrooms; reflection nooks; one-on-one meeting rooms; breakout areas for pairs, individuals or small groups; university-style tutorials through to outdoor courtyards, decks, gardens and piazzas.

21st century teaching

We have designed the new staff hub to support teachers' professional development, collaboration and planning – somewhere to share ideas and resources. A separate lunch area for gatherings and quiet contemplation will offer respite from the staff work spaces within the senior and junior learning centres.

To better support contemporary and evolving teaching methods, be more inclusive of all student abilities, and provide a better teaching experience, learning environments feature:



Artist impression

Staff hub

- comfortable, fresh modern materials and generous natural light
- diversity of space types and sizes
- opportunities for interaction, personalisation and collaboration
- learning neighbourhoods with breakout spaces and nooks
- for focus work or specialist education
- space for creative and flexible delivery of the curriculum
- collegiate workspaces and collaborative staff hubs
- agile spaces that can easily adapt to change.



How modular construction brings quality buildings to students faster

The architect-designed, modular buildings are constructed in Victoria, off-site by specialist modular building manufacturers.

When compared to traditional building methods, modular buildings can be delivered in half the time with less disruption to students, staff and learning programs. Making for exciting viewing, the buildings arrive on the school site, pre-built as 'modules' for permanent installation and interior fit-out by the builders.

Sustainably designed and made, modular buildings make the most of natural light and cross-breezes. Together with thermal glazing, low-energy use lighting and quality materials – they provide comfortable and inspiring learning environments that are flexible and enduring.

Meet the designers

Project design

FMSA Architecture

Master plan

Crosier Scott Architects

Timeline

Term one, 2019 & term one, 2020	Consultation with school community
Term one, 2020	Modernisation project plan released
Term two, 2020	Architect designs unveiled
Term three, 2020	Construction start (approximate)
Term three and four, 2020	Permanent modular buildings delivered, installed and fitted-out
Term one, 2021	New buildings open

Further information

To view the designs and for construction updates visit schoolbuildings.vic.gov.au

For enrolment inquiries,

tel **9304 0400**,

email glenroy.sc@education.vic.gov.au or

visit glenroycollege.vic.edu.au

You can contact us:

Victorian School Building Authority



1800 896 950



vsba@edumail.vic.gov.au



[/victorianschoolbuild](https://www.facebook.com/victorianschoolbuild)



www.schoolbuildings.vic.gov.au



For information in your language, please call the Victorian School Building Authority's translation service on **03 9280 0712**.